



Petoskey-Harbor Springs Area
community foundation

2021-2022 ANNUAL REPORT

30 Years of Connecting People with Resources

30 Years of Giving and Community Impact



Hon. Jennifer E. Deegan
President, Board of Directors

David L. Jones
Executive Director

30 YEARS OF CONNECTING LOCAL PEOPLE with Local Resources

"It takes a noble man to plant a seed for a tree that will some day give shade to people he may never meet." D. Elton Trueblood

Over thirty years ago, a group of community-minded, forward-thinking people planted a seed. Our founders established your Community Foundation to invest in the future of the community they loved, to connect local generosity with local needs. Our founders envisioned that this seed would grow and serve the people of Emmet County, not just in the short term, but for generations to come.

Thirty years later, we celebrate this incredible vision and reflect on three decades of growth and impact. Our roots are firmly planted and well established in Emmet County. Our branches are broad and support a wide variety of partner organizations and community issues.

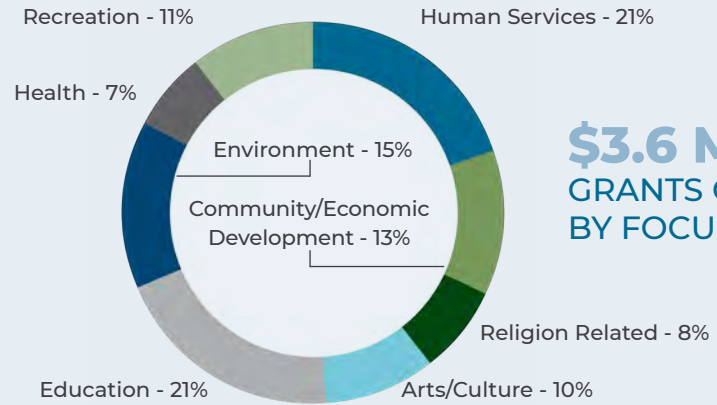
As we celebrate 30 years, your Community Foundation is grateful for our founders' early vision. We are grateful for the care and nurturing the first seed received not only from our founders but also from our donors, our partners, and our community. We are grateful for a community that supports us through gifts, service, and partnerships.

As our founders did those many years ago, we continue to look forward. Your Community Foundation continues to strengthen our community through innovative grantmaking and through leadership roles on the issues that impact our community every day. We are able to do this work, to continue this growth, thanks to you. Together we can do more. For good. For ever. For everyone.

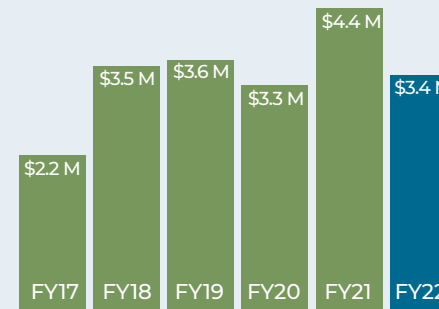
Hon. Jennifer E. Deegan
President, Board of Directors

David L. Jones
Executive Director

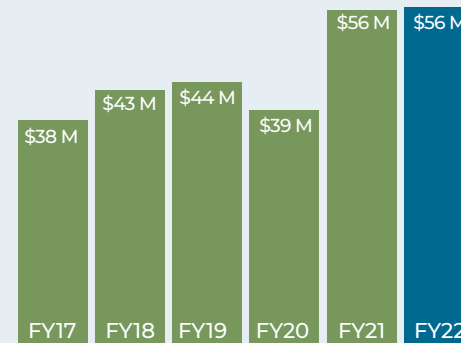
FISCAL YEAR 2022 Annual Report Snapshot



\$3.6 MILLION
GRANTS OUT
BY FOCUS AREA



\$3.4 MILLION
IN GIFTS RECEIVED
1,236 TOTAL GIFTS



\$56 MILLION
NET ASSETS BY YEAR

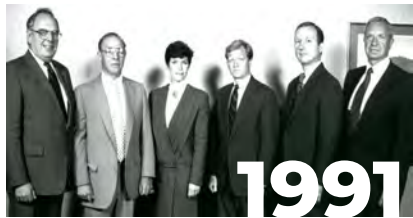
All figures are for Fiscal Year 2022, ended March 31, 2022. Our audited financial statements and IRS Form 990 are available on our website, www.phsacf.org. You may also contact our office for copies.

CELEBRATING 30 YEARS OF COMMUNITY SUPPORT & Looking to the Future

Our founders imagined our Community Foundation as a place where local dollars could be pooled and grown to support people, organizations and issues, all to make our community stronger. Looking back at milestones from our first thirty years serves as inspiration as we look ahead to the next thirty.

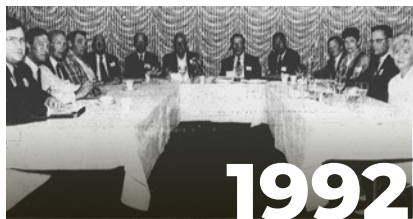


Learn more about the work we do at our newly designed website!



1991

A group of forward-thinking and civic-minded individuals gathered to consider new ways of investing in the community they all loved and sought guidance from Frey Foundation and Council of Michigan Foundations.



1992

The first full board of directors was elected at our first annual meeting on July 16, 1992.



1993

As part of our very first grantmaking cycle, we awarded \$16,972 to seven local organizations.



1994

Our Youth Advisory Committee (YAC) was established through a generous challenge grant from the W.K. Kellogg Foundation.



1998

The Community Foundation Board and Youth Advisory Committee (YAC) were recognized for our innovative grantmaking at the Council of Michigan Foundations' annual conference.



1999

Grantmaking to local organizations tops the \$1 million mark since the first grants were awarded in 1993.



2004

The Community Foundation members elected Jessica Mauer (back row, far right), a member of our Youth Advisory Committee (YAC), to serve on the board of directors, establishing a permanent position for a youth member.



2009

Founding executive director Maureen Nicholson retired from the Community Foundation after nearly two decades of service to the organization, and program officer David (DJ) Jones was appointed as her successor.



2011

After establishing the Little Traverse Bay Protection and Restoration Fund, the Community Foundation met and exceeded a generous matching grant from CMS Land Company who contributed a total of \$500,000 to the fund.



2018

Through a regional partnership, the Community Foundation and our colleagues at Charlevoix County Community Foundation and Grand Traverse Regional Community Foundation, received a grant from the C.S. Mott Foundation to fund a regional Clean Energy Initiative.

Our Founding Board of Directors

John S. Clark, Chairman of the Board
Hiland Hall, President
David H. Irish, Vice-President
James T. Ramer, Secretary
John E. Fought, Treasurer
Maureen Nicholson, Executive Director
Herbert H. Carlson
Robert W. Clarke

Mary Caroline Frey
Edward J. Frey Jr.
James N. Gamble
Richard A. Lent
Edgar Lotspeich
eddi Offield
Shirlee L. Tallberg
David F. Thomas

BOLD indicates Deceased



IN MEMORIAM: **Ted Frey**

A reflection on the 30th anniversary of our Community Foundation includes gratitude for the people who have made our organization and our work possible. In this anniversary year, we lost a founder, mentor and friend with the passing of Ted Frey in April 2022. Ted served first as a champion of the community foundation model here in northern Michigan, sharing his combined business and philanthropic acumen with local leaders from around Little Traverse Bay. Ted guided the establishment of a lasting and local charitable resource for the people of Emmet County, a place he dearly loved. When the Community Foundation elected its founding board of directors in 1992, Ted was among them and continued his board service until 2006. But his service to our organization went well beyond his board role.

Maureen Nicholson, founding executive director of the Community Foundation, shared this remembrance: "Ted was a visionary, a forward thinker, always focused on the long-term outcome. He embraced the community foundation concept, which was all about collaboration and building resources to strengthen a community. In other words, local people coming together to solve local problems."

I believe a community foundation is the most important legacy that one can leave to a community that he or she loves. -TED FREY



OUR MISSION

To improve the quality of life for all people in Emmet County, by:

Connecting donors with community needs

Building a permanent source of charitable funds to serve our area

Addressing a broad range of community issues through innovative grant making

Championing philanthropy and active citizenship

Strategic Initiatives



Housing

We're dedicated to supporting affordable housing and attainable housing solutions in our beautiful area.



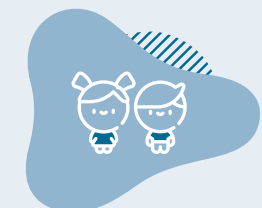
Local Food

Our early investments in local food initiatives have helped grow today's vibrant local food system.



Clean Energy

We continue to support clean energy initiatives throughout Emmet County.



Child Care

We are working to find sustainable solutions to the child care shortage in Emmet County.



30 YEAR IMPACT STORY:

Housing Solutions

The need for available and attainable homes in Emmet County is critical—an issue impacting everyone in our community. Finding an affordable place to live is a challenge for friends, neighbors, business owners, families, our workforce, and our local economy. This need for homes, however, is not new.

Our investment in housing can be traced back to our earliest days. In 1994, the Northern Michigan Housing Fund was established as our very first Field of Interest fund. Local citizens and business owners with a keen interest in addressing housing needs helped established the fund. As the fund grew, the Community Foundation awarded modest grants to local organizations working in the housing space in Emmet County.

From this early work, our roots have deepened over the years as has our ability to support a broader range of housing needs. Several years ago, the Community Foundation joined a group of community members in what has become the Little Traverse Bay Housing Partnership. We also recognized the complex challenge of housing, identifying it as one of our strategic initiatives and focusing both staff time and financial resources to help develop solutions. In 2020, we granted dollars to establish the Emmet Housing Ready Director, a boots-on-the-ground housing position in Emmet County, support which continues today.



Oden House



Former Gruler property on Emmet Street

Removing Barriers to Create Workforce Housing

As the need for tangible housing solutions increases, so has our investment in these solutions. Costs associated with creating new housing remain the most significant barrier, whether cost of land, infrastructure such as roads or septic, building materials, environmental testing, engineering or legal fees.

With support from the Frey Foundation, Emmet Housing Solutions Fund was established in 2019, specifically to address these financial barriers to creating homes.

In August 2020, we made a short-term, zero-interest loan to Northwest Michigan Habitat for Humanity to purchase a quality, factory-built modular home for one of its properties in Oden. Today that home is one of four in Oden that has been purchased by local families. In January 2022, we granted \$80,000 to Northwest Michigan Habitat for key infrastructure costs at its development in Alanson where they plan to build a total of 32 homes.

In May 2022, your Community Foundation purchased the former Gruler property at 900 Emmet Street in the City of Petoskey. In purchasing the property, we have preserved the parcel for future workforce housing, namely the Lofts at Lumber Square, an approved 60-unit apartment complex proposed by G. A. Haan Development from Harbor Springs.

“We recognized that our contribution to this project would be the cost of the land,” said David L. Jones, Executive Director. “Purchasing this property buys us the gift of time as we continue to work closely with Haan Development to secure additional funding and financing for the project. We are working on plans for a third party, specifically a nonprofit partner with experience managing workforce housing, to eventually own and manage the development once completed.”



30 YEAR IMPACT STORY:

Local Food

Putting Local Food on the Map ▶

At the heart of our area's rural character is local agriculture. The Community Foundation's investment in local food initiatives grew from conversations about land use in the mid-2000s. Our community identified and valued "the area's rural character and small-town atmosphere," and the Community Foundation saw an opportunity to play a leading role in increasing the viability of local agriculture.

One of our early investments in local food involved Michigan Land Use Institute (now Groundwork Center for Resilient Communities) and McLaren Northern Michigan. This partnership created a graphic map of Emmet County farms and farmers markets, and, as the branding and marketing evolved, expanded to a regional food guide and map. Additional efforts helped Emmet County farmers connect with other regional food partners including the Northwest Michigan Food and Farming Network.



Petoskey Farmers Market



Pellston Hoop House

◀ Planting the Seeds of a Healthy Local Food System

When the Community Foundation identified local food as one of our strategic initiative areas ten years ago, we were able to invest in a variety of programs that brought awareness to local food and farming. Our early partnership with Groundwork Center helped establish a local food and farming program where Groundwork's Jen Schaap today leads this good work from their Petoskey office. Their Food and Farming Program includes farm to school, food access, culinary medicine, 10 Cents a Meal, Building Resilient Communities, and mentoring FoodCorps service members. Our investments in Groundwork and in other nonprofit partners has created building blocks for what is today a vibrant local food system connected to community through our school cafeterias and classrooms, through senior centers, through farmers markets and food pantries, and through an increased appreciation for local food and farming.



*Jen Schaap,
Groundwork*

Seeing the Fruits of our Labor ▲

Great things have grown out of modest investments in local foods. Sprouting from these larger initiatives, numerous grants have supported a variety of projects connecting local people to local food. Programs through the Friendship Centers of Emmet County and Health Department of Northwest Michigan helped connect both senior citizens and students with local food.

At the Public Schools of Petoskey, food service director Beth Kavanaugh now spends 92% of her produce budget at local farms. A small discretionary grant helped Petoskey's Central Elementary start a school garden in partnership with the Health Department of Northwest Michigan and Groundwork. Several Youth Advisory Committee (YAC) grants helped Pellston Public Schools offer a homemade soup option in the school cafeteria and helped the school purchase needed supplies for its school hoop house. Anonymous donor-directed support through the Community Foundation has helped the Pellston Schools hire a "from scratch" chef to lead its food service program, bringing healthier and local food options to the students.





30 YEAR IMPACT STORY:

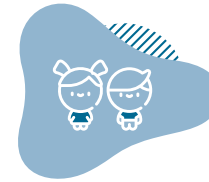
Supporting Clean Energy



Petoskey Solar Tour

Building on the momentum of both community interest and of past work, the Community Foundation continues to support clean energy projects throughout Emmet County. One of the first solar demonstration projects in Petoskey was the installation of a solar panel array on the North Central Michigan College campus in September 2019, spearheaded by Leadership Little Traverse. In early partnership with Groundwork Center for Resilient Communities, we supported bringing a clean energy policy specialist to Petoskey which helped launch a number of projects and clean energy initiatives in Emmet County.

A 2019 Community Foundation grant supported the City of Petoskey's energy audits to improve the energy efficiency of its buildings. In 2020, the City of Petoskey boldly and unanimously committed to 100 percent clean energy by 2035. Another grant helped with the installation of a solar array at Pellston Public Schools. In the fall of 2021, we helped support a Petoskey Solar Tour, hosted by Michigan Interfaith Power and Light, which spotlighted both public and private solar installations. The outcome of the tour and coordinated outreach saw a number of local households sign up for a solar group buy in Spring 2022.



30 YEAR IMPACT STORY:

Supporting Our Families

College, Community Foundation Join to Address Local Child Care Shortage

Child care is an essential part of our community's fabric. Early care and education services, such as child care, are a necessary support for any community and any economy to thrive. Throughout the country, communities have struggled to support a system of accessible, high-quality, affordable early care and education services.

To address the needs of Emmet County to have a sustainable child care system, North Central Michigan College has embarked on a yearlong research project to provide innovative solutions to our area's child care shortage. The NCMC Child Care Initiative will provide an evidence-based plan for a sustainable child care system designed to meet the county's needs now and in the future.

In partnership with NCMC, the Community Foundation awarded the college a \$50,000 grant in support of the initiative. Additional funding from the Frey Foundation allowed the college to formally launch the program in Spring 2022.

"The shortage of available child care in Emmet County presents a challenge that transcends any single agency or organization," said NCMC President David Roland Finley. "Because of this significant gift from the Petoskey-Harbor Springs Area Community Foundation, we are able to meet that challenge head-on with collaboration and creativity."

Support for NCMC's Child Care Initiative is well aligned with the Community Foundation's mission to improve the quality of life for all Emmet County residents.



NCMC's Child Care Initiative



2021-22 YAC

INVESTING IN YOUTH

Since 1994, our Youth Advisory Committee (YAC) has been charged with recommending grants that impact youth and families in Emmet County. In its very first grant cycle in 1995, the YAC awarded a total of \$5,000 in grants to eight local organizations. During this last fiscal year, these 20 teens awarded nearly \$100,000 to 20 organizations.

The last YAC year saw some return to “normal” with its grant interview happening in person again for the first time in over two years. Our young philanthropists also completed a needs assessment, an anonymous survey of their middle- and high-school peers to gather data on youth needs. Topping the needs assessment was mental health issues like depression, anxiety, or suicide. Academic pressure ranked second among the respondents and third was mental health awareness and education. The committee reviewed the needs survey data as well as ways to incorporate these needs in their grantmaking.

Thanks to our YAC, grants awarded in the last fiscal year are funding programs for newborns to high school students—access to healthy food in schools, literacy tools, recreation opportunities, quality preschool programs and after school programs for older students. From teaching entrepreneurship at the local farmers market to after-school tutoring programs.

“Pretty impactful in my life and it has made me an overall better person. I also am more open to meeting new people and introducing who I am to others.” -CURRENT YAC COMMITTEE MEMBER

YOUTH ADVISORY COMMITTEE

Charlie Baker
 William Cabana
 Alex Carlson
 Callie Carlson
Suzy Carpenter*
 Taylor Dickinson
Abigail Donovan
Heidi Dumas
 Anna Dundon
 Cadence Glass
 Will Goelz*
 Grace Hayhurst
 Laney Jakeway
 Annie Jones
 Callie Keiser
 Brandon Nguyen
 Quinn O'Neill
 Jordan Stark
James Stebelton*
 Sara Wochoski

Sarah Ford, Advisor
 Tamara Kiogima, Advisor

**Class of 2022
 Graduating Seniors*

BOLD indicates YAC Officers

YAC Year in Review

20

EMMET COUNTY TEENS

22

GRANTS RECOMMENDED FISCAL YEAR 2022

20

ORGANIZATIONS SUPPORTED

\$97,155

IN GRANTS AWARDED FROM FUND FOR YOUTH FISCAL YEAR 2022



KIDS HITTING THEIR STRIDE

Last year 120 Harbor Springs students in kindergarten, first and second grades were able to get outside and use brand new balance bikes, giving all students a chance to learn or improve their biking skills. Funding recommended by the YAC provided 22 adjustable helmets and 22 balance bikes—bikes without pedals that help young riders develop both balance and riding skills. Physical education teacher Kristie Holzschu shared that the bikes were a hit with students, even previously hesitant ones. A former YAC member herself, Holzschu added that the balance bike program helps prepare the students for the popular Kids Pedaling with a Purpose initiative which gets upper elementary students out on our local bike trail systems.



BOARD OF DIRECTORS

Dana Andrews, Secretary*
 Jennifer Attie
 Steven Boeckman
 Jennifer Deegan, President**
 Kathryn Erber*
 James Ford, Vice President*

William Goelz
 Robert Keedy
 Janet Mancinelli
 Webb Martin
 Emerson Meyer
 Melissa Nguyen, Treasurer*

Mary Rapin
 Sarah Shuman
 B. Thomas Smith Jr.

**Executive Committee*

COMMITTEES

GOVERNANCE

Jennifer Attie
 Jennifer Deegan
 Michael Eberhart
 James Ford
 Maureen Nicholson
 James Ramer

GRANT DISTRIBUTION

Jennifer Attie
 Steven Boeckman
 Carla Crockett
 Steve Cross
 Will Henagan
 Robert Keedy
 Webb Martin
 Sarah Shuman

FINANCE

Steven Boeckman
 Daniel Clarke
 Denise Croake
 Clark Elwood
 John Fought
 Janet Mancinelli
 Melissa Nguyen
 Todd Winnell

INVESTMENT

Dana Andrews
 Courtney Font
 Webb Martin
 Emerson Meyer
 Maureen Nicholson
 Jeffrey Shepard
 B. Thomas Smith Jr.

COMMUNITY IMPACT

Daniel Clarke
 Jennifer Deegan
 James Ford
 Janet Mancinelli
 Webb Martin
 Emerson Meyer
 Sarah Shuman
 Todd Winnell

MARKETING AND DEVELOPMENT

Charles Gano
 Susan Howbert
 Virginia McCoy
 William Meengs Jr.
 Emerson Meyer
 James Schroeder
 Sarah Shuman

LITTLE TRAVERSE BAY PROTECTION AND RESTORATION

Jennifer Attie
 Frank Ettawageshik
 James Ford
 Doug Larson

SCHOLARSHIP

Joelle Drader
 Robert Keedy
 Maggie Kloss
 Mary Rapin
 Glen Young

KIWANIS CLUB OF HARBOR SPRINGS SCHOLARSHIP

Robb Carr
 Charles Stockton
 Damon Whitfield

JENNIFER KULLIK MEMORIAL SCHOLARSHIP

Holly Angileri
 Michael Angileri
 Julie Biddick
 Ken Biddick
 Bill Frazier
 Larry Gunderson
 Sue Gunderson
 Deb Kullik
 Mary Lieberman
 Richard Lund
 Chris Nicholson
 Terry Carlson-Steinmetz

STAFF

Loriel Grigsby
 Mary Cummings
 Kassia Perpich
 David 'DJ' Jones
 Laurissa Wendland
 Sarah Ford



STAFF



OUR FUNDS:

Supporting Community

COMMUNITY FUNDS

Roma Walstrom Bolline Fund
 Sally and John Clark Fund
 Catherine G. Curran Fund
 Curtis Family Fund
 Drost Community Fund
 Suzanne G. Felt Fund
 Fund for the Community
 Hi and Joedy Hall Fund
 Gladys and Jack Hamill Fund
 Bonnie Hess Fund
 Robert Horner Fund
 Donald Hufford Endowment Fund
 Marilyn M. Icke Fund
 Impact Investing Fund
 David H. Irish Charitable Fund
 Fred and Joyce Koehler Family Fund
 Lent Family Fund
 Lotspeich Family Fund
 Matt Mathias (Emer A. Mathias) Memorial Fund
 Marge May Fund
 Pearl E. McPike Charitable Fund
 Thomas S. and Ellen K. Noneman Fund
 Albert and Carol Osborn Memorial Fund
 Frances Hamilton Schirmer Fund
 Frances and Jeffrey Shepard Fund
 Budd and Shirlee Tallberg Charitable Fund
 Hugh D. Winnell Fund
 Jack and Elayne Zaiger Family Fund

COMMUNITY GIVING CIRCLES

Birchwood Outreach Fund

Edward Jones Community Outreach Fund

Harbor Cup Charitable Fund - Team Boyne
 Harbor Cup Charitable Fund - Team Harbor
 L'Arbre Croche Fund
 Sunrise Rotary Charitable Fund

DONOR ADVISED FUNDS

David and Brenda Bell Family Fund
 Neil T. and Marsha L. Bidwell Charitable Fund
Biggs Family Charitable Fund
 Blanchard Family Fund
 Bleyaert Family Fund
 Bund Family Fund
 Buzzelli Family Charitable Fund
 Byers Family Charitable Fund
 Tom and Susie Carruthers Fund
 Dan and Linda CasaSanta Family Fund
 Catalina Starlight Fund
 Maggie and Bob Charlton Family Fund
 Chermshire Family Fund
 Circuit Controls Corporation Charitable Fund
 Clarke Family Fund
 Perry D. and Karen L. Clark Fund
 Julie and Murray Cotter Family Fund
Joe and Julie Damore Family Fund
 Deborah and David Deal Gift Fund
 Donovan Charitable Fund of Harbor Springs
 Jack Michael Duff Memorial Fund
 Edgewater Community Fund
 Erickson Family Fund
 Everyone Matters Fund
 Michael J. and Marjorie K. FitzSimons Fund
 Chip and Jean Frentz Family Fund



OUR FUNDS SPOTLIGHT:

Gloria Frank Anishinaabek Education Fund

Gloria Frank spent almost all of her 93 summers in Harbor Springs. Her family connections to Harbor Springs went back generations and her interest in the place, its history and its people never waned. When she remembered her second cousin Ted Halsted in her will following her death in 2019, Ted wanted to honor his beloved cousin in return. In 2021, Ted established the Gloria Frank Anishinaabek Education Fund at the Community Foundation. The endowed fund was established to provide financial support for Native youth and adults through the various programs offered by, or administered by, the Niigaandiwin Education Department of the Little Traverse Bay Bands of Odawa Indians (LTBB). Flexible in its approach, the fund will provide an annual allocation to the LTBB Education Department which can be awarded for tuition, room and board, school materials, or other education-related costs.

DONOR ADVISED FUNDS CONTINUED...

Ted and Brenda Frey Donor Advised Fund
Frey Foundation Fund
Gano Family Fund
Jack Garber Family Fund
Gijgowi Fund
William and Louise Graham Fund
Patti and Bally Grannis Family Fund
Hameister Family Charitable Fund
Hanna-Renkes Literary Guild Fund
William H. and Louise T. Harrison Fund
Barbara and Jerome Hoganson Fund
Holder Family Foundation Fund
Dr. H. Ross and Virginia G. Hume Charitable Fund
Ann K. Irish Charitable Fund
Thomas and Patricia Jeffs Fund
Cathy Kalahar and David Evrard Charitable Fund
Keller Flaherty Family Fund
Everett and Lois Kircher Family Fund
Knowlton Family Fund
Kroeger-Mainland Family Fund
Ledyard Family Charitable Fund
Loyd Family Fund
Lutjens Family Fund
The Mainland Family Fund
McKinney Family Charitable Fund
Meyerson Family Tzedakah Fund
Maude and Gorton Milliken Fund
Jim and Trish Murray Charitable Fund
Steve and Anne Murray Charitable Fund
Mort Neff Family Fund
Neithercut Family Fund
Nelson-Dennis Family Fund
Ted and Lori Pall Charitable Fund
Todd and Kathy Petersen Charitable Fund
Petoskey Rotary Charities Fund
Petoskey Rotary Park Fund
John D. Pickering Fund for Equal Parenting
Craig and Mary Rapin Family Fund
Mary Clare Reynolds Joyce Fund
Scholl Family Fund
Bob Schulze Fund for Creative Writing
Roger E. and Peggy Dicken Schwer Fund
B.J. Shawn and Becky Kranig Fund
Linda Sheppard Nurses Fund
Mary Lou and Tom Smith Family Fund
Scott and Dibby Smith Family Fund
Stafford and Janice Smith Family Fund
Sturgeon River Pottery Fund for Education
in Visual Arts
Susan Irish Stewart Charitable Fund
Tanton Family Fund
Marana Webber Tost Charitable Fund
VandenBrink Biddick Family Fund
Brian and Dawn Wagner Charitable Fund
Walstrom Marine Charitable Fund
Winnell Family Fund
Marjorie A. Winnell Healing Center Fund for
Complementary Medicine
David and Barbara Young Fund

FIELD OF INTEREST FUNDS

Jerolene and Lewis Brown Charitable
Youth Fund

Carpenter Family Fund
Emmet Housing Solutions Fund
Environmental Education Fund
Essential Needs Fund
Fund for Youth
Deb Greenwald Foster Family Care and
Support Fund
Healthy Community Fund
Robert Horner Fund for Natural Resource
Conservation
Jeff Kring Outdoor Youth Education Fund
Little Traverse Bay Protection and Restoration
Fund
Dree Look Lo Tennis Fund
Matt Mathias (Emer A. Mathias) Fund for
Conservation
Northern Michigan Housing Fund
Schulze-Stern Fund for Young People
Science for the Future Fund
Dorothy Scott Fund for Senior Citizens
Shoreline Fund
Urban Forestry Fund
Ward & Eis Elder's Project Fund
Zonta Women and Children's Fund

SPECIAL PROJECT FUNDS

Arctic Grayling Reintroduction Fund
Harbor Springs Skate Park Special Project Fund
Petoskey Community Pool Fund
Petoskey Swimming Pool Fund
Petoskey Tennis Courts Fund
Winter Sports Park Fund

DESIGNATED & ORGANIZATIONAL FUNDS

Administrative Endowment Fund
Animal Security Fund
Mary Askew Memorial Fund
Bay Bluffs Endowment Fund
Bay View Association Endowment Fund
Clancy Bellmer IOOF Little League Fund
Blissfest Endowment Fund
Benjamin B. Blum Lodging Assistance Fund
Agatha O. Boettger Senior Citizens Fund
Camp Daggett Fund
Camp Daggett Kloplic Family Campership Fund
Challenge Mountain-Spirit Day Camp Fund
Char-Em United Way Endowment Fund
Child and Family Services of Northwestern
Michigan Fund
Concord Family Association Fund
Crooked Tree Arts Council Cultural Fund
Emmet-Charlevoix Bar Foundation Fund
Emmanuel Episcopal Church Bequest Fund
Emmanuel Episcopal Church Endowment Fund
Emmet County Lakeshore Endowment Fund
First Presbyterian Church of Harbor Springs
Bequest Fund
First Presbyterian Church of Harbor Springs
Endowment Fund
First Presbyterian Church of Petoskey
Endowment Fund
First Tee Fund
Foster-Hartley Lake Preserve Stewardship Fund
Gloria Frank Anishinaabek Education Fund

DESIGNATED & ORGANIZATIONAL FUNDS CONTINUED...

Friendship Centers of Emmet County
Endowment Fund
James N. Gamble Family Fund
William C. and Jennie S. Germond Fund
Great Lakes Chamber Orchestra Endowment
Fund
Marjorie E. Green Fund for Little Traverse Bay Hu-
mane Society
Harbor Area Housing Fund
Harbor Springs Area Historical Society
Endowment Fund
Harbor Springs Education Foundation Fund
Harbor Springs High School Band Boosters Fund
Harbor Springs Library Endowment Fund
Land and Water Education Fund
Petoskey Lions Club Fund
Little Traverse Choral Society Endowment Fund
Little Traverse Civic Theatre/Ross Stoakes Memorial
Fund
Little Traverse Historical Society and Museum Fund
Little Traverse Sailors Endowment Fund
Manna Fund
Manna Project Endowment Fund
Steve and Molly Kircher Fund for Manna
Matt Mathias (Emer A. Mathias) Memorial Fund for
Camp Daggett
Matt Mathias (Emer A. Mathias) Memorial Fund for
Little Traverse Historical Society
Matt Mathias (Emer A. Mathias) Memorial
Scholarship Fund
Emer A. Mathias NCMC Foundation Fund
Otho J. Mathias Scholarship Fund
Michigan Dyslexia Institute - Northern Michigan
Center Endowment Fund
Wil Moyer Music Scholarship Fund
Nehemiah Project Endowment Fund
Nehemiah Project Fund
New Life Anglican Church Endowment Fund
North Central Michigan College Foundation Special
Project Fund
Northern Community Mediation Fund
Northern Community Mediation Endowment Fund
Northern Michigan Fund
Northwest Michigan Food for Humanity Fund
Northwest Michigan Habitat for Humanity Fund
Albert and Carol Osborn Memorial Fund for the
Friendship Centers of Emmet County
Petoskey Area Garden Club Endowment Fund
Petoskey Area Garden Club Fund
Petoskey District Library Fund
Petoskey Education Foundation Fund
Planned Parenthood Northern Michigan Fund
SAFE in Northern Michigan Fund
Scenic Michigan Endowment Fund
Ann Smith Charitable Fund
George Armstrong Spirit Day Camp
Endowment Fund
St. Francis Xavier Endowment Fund
Tip of the Mitt Watershed Council Water
Quality Fund

Top of Michigan Trails Council Fund
Walloon Lake Trust and Conservancy Fund
Hugh D. Winnell Scholarship Fund in Memory of
Vera Jean and Marjorie Winnell for Kiwanis
Hugh D. Winnell Scholarship Fund in Memory of
Vera Jean and Marjorie Winnell for NCMC
Hugh D. Winnell Scholarship Fund in Memory of
Vera Jean and Marjorie Winnell for PEF
Women's Resource Center of Northern Michigan
Endowment Fund
Women's Resource Center Jan Mancinelli
Operations Fund
Women's Resource Center Operations Fund

CHARITABLE GIFT ANNUITIES

James and Carolyn Cloutier Charitable Gift Annuity
Jennifer Eis Charitable Gift Annuity
Gladys Hamill Charitable Gift Annuities
Sharon Walker Charitable Gift Annuity

SCHOLARSHIP FUNDS

Baiardi Family Foundation Scholarship Fund
Scott Batchelor Scholarship Fund
Cafe Society Educational Fund
James and Carolyn Cloutier Scholarship Fund
Thomas Dale Sr. Memorial Scholarship Fund
Robert Jensen Dau Memorial Scholarship Fund
First Tee Scholarship Fund
Anna Funk Memorial Scholarship Fund
Janet and Richard Gorman Scholarship Fund
Gerald Gramzay-Stafford's Hospitality Culinary
Scholarship Fund
Harbor Springs Opportunity Scholarship Fund
Home Builders Association of Northern Michigan
Building Industry Career Scholarship Fund
Amy Elizabeth Kelbel Scholarship Fund
Kiwanis of Harbor Springs Scholarship Fund
Jennifer A. Kullik Memorial Scholarship Fund
Sara J. Latimer Redpath Church Memorial
Scholarship Fund
Marshall-Parker Family Scholarship Fund
Marshall-Smith Scholarship Fund
C. W. McClellan Scholarship Fund
Mary McClutchey Amacher Scholarship Fund
Alberto Moreno Memorial Scholarship Fund
Olofsson Family Scholarship Fund
Petoskey Area Business and Professional Women's
(BPW) Scholarship Fund
Michael Gale Phillips Memorial Scholarship Fund
Barry Potter/HOPE Scholarship Fund
Ephraim Shay Scholarship Fund
Stafford and Janice Smith Scholarship Fund

BOLD indicates new funds



OUR FUNDS SPOTLIGHT:

Women's Resource Center of Northern Michigan

For Women's Resource Center of Northern Michigan, established in 1977, setting aside funds for the future had an early and humble beginning. Retired, long-time director of the center, Jan Mancinelli (above left), recalled that the first gifts that would eventually seed their first endowment fund came in the organization's early years, well before the Community Foundation existed.

Following the death of their mother, a local family designated Women's Resource Center of Northern Michigan to receive memorial gifts in her honor. The family shared with Jan that the mother had been a battered woman and had never had choices, never had a place to go for support. Jan said those memorial gifts totaled \$239 and "at that moment, I just decided to form a separate bank account and set aside those memorial dollars. The concept of 'for good, forever' was in my mind, that we would start an endowment someday."

The organization continued to set aside memorial gifts and in 1994 started its endowed fund at the Community Foundation with \$10,000. Today that fund has grown exponentially and, along with two more recently established funds, provides flexible operating dollars the center can use to meet needs. Gail Kloss (above right), executive director of the center, said their funds at the Community Foundation have helped the organization in myriad ways.

"When COVID happened, we weren't sure how the pandemic would impact our entire community and our organization. But we knew that, because of these funds, we would be able to continue our work in the community." The endowed funds have also helped support important programs and upgrades at the center when other state and federal dollars are unavailable, including for the Children's Advocacy Center, which provides a safe, supportive space for children who have been physically or sexually abused or have witnessed a violent act.



OUR DONORS:

Funding Our Future

| | | |
|--------------------------------------|----------------------------------|--|
| 1314 US31 Holdings, LLC | Rep. and Mrs. John W. Bergman | Scott Cecil |
| James and Susan Adams | Alan and Barbara Berlin | Challenge Mountain |
| Linda Adams | James and Sara Bernardin | Richard and Carolyn Chambers |
| Tom and Jodi Adams | Robert and Mary Bessette | Laurie, Brian, Zach and Jacob Champion |
| Matthew Adamski | Sheila Beutler | Charles Stewart Mott Foundation |
| Douglas Albrecht | Mary Biagini | Charlevoix County Community |
| Drs. Tony and Lauren Alessi | Neil and Marsha Bidwell | Foundation, Frederick and Barbara |
| Steve and Renee Alexandrowski | Thomas and Sheila Biehl | Malpass Family Fund |
| Jason and Suzanne Allen | Steve and Kathy Biggs | Charlie and Diana Burgtorf |
| Dean Allmond | George and Beverly Biltz | Maggie Charlton |
| Matthew Lapham and Colleen Almodovar | Birchwood Construction | Robert and Beth Christians |
| AmazonSmile Foundation | Lauren Birmingham | Mike and Linda Chumbler |
| American Endowment Foundation | Robert and Elizabeth Bitterman | Lisa A. Cicinelli |
| American Junior Golf Foundation | Jobst W. Blachy | Mark and Laura Cieslak |
| Brad and Hannah Anderson | John Blair | City of Harbor Springs |
| Kurt and Carrie Anderson | Lisa and Paul Blanchard | James and Nancy Clark |
| Rick and Sharon Anderson | Edward and Debra Blews | John and Nancy Clark |
| Dana F. Andrews | Ross Blumke | John and Mary Clark |
| Anonymous (19) | Steve and Kathy Boeckman | James and Patricia Clarke |
| Ashley (Bingaman) Antonishen | Larry and Joanne Boerman | Marilyn and John Cleary |
| Mark and Denise Antonishen | Merial J. Bommarito | Cleveland Foundation, |
| Joanne N. Arbaugh | Kate Bondi | David and Robyn Barrie |
| Arctic Grayling Club | Pier and Renee Borra | Jim and Carolyn Cloutier |
| Meredith M. Arneil | Doug and Sue Bouwense | Don and Sarah Cohen |
| TJ Artushin | Carol Boychuck | Kathryn Coleman |
| George and Valerie Ash | Wendy B. Boyd | Eric and Donna Collins |
| Bruce and Sharon Ashley | John D. Boyles | Mark and Deborah Collins |
| Ryan Atkins | Boyne Resorts | Renee and Mike Collins |
| Kal and Jenni Attie | Ross and Tony Braun | Columbus Foundation, Sandra and |
| Joe and Kathryn Audia | Nancy V. Breighner | Ronald Baldwin |
| Thomas and Dale Auffenberg | Christopher and Karen Brieden | Columbus Foundation, Frank and Jewel |
| Donald and Margaret Austin | Christopher and Carlin Briggs | Benson |
| Jeffrey and Barbara Austin | Dale and Kayla Briggs | Community Foundation for Southeast |
| Automotive Careers | Robert W. Briggs | Michigan, Janet and Robert Lee Family |
| Dick and Annette Babcock | Bill and Shannon Brower | Fund |
| Cheryl and David Bachleda | Steve and Holly Brown | Community Foundation of Collier |
| John and Emme Bade | Norma K. Brown | County, Mr. and Mrs. Jim Sprow |
| Baiardi Family Foundation | Laura A. Buckingham | Community Foundation of Greater Flint, |
| Mary J. Baird | Dana and Heidi Bullen | Jeremy and Amy Piper Fund |
| Michael and Nancy Baity | Sally and Ian Bund | Amanda Conklin |
| Debra Baker | Max R. Bunker | Eric and Sue Conley |
| Jack and Susie Baker | William Burgess and Kathryn Wood | Jim and Ardyce Conley |
| Richard J. Baker | Maureen H. Burke | William Connolly Jr. |
| Sandy Baker | Paulette Burkmyre | Conservation Cards |
| Thomas and Lauren Balames | Roy and Alice Burlington | Edmund G Coomes II |
| Molly Ballor and David Green | Burnette Foods | John and Mariette Cooper |
| John K. Banks | Melissa Burns and Jeff Larkin | Thomas and Beth Cooper |
| Darryl and Maryle Barbe | Burr Enterprises Inc. | Charlotte W. Corbett |
| Paul and Nancy Barker | Ann Joslyn Burrows | Michael and Darcy Costello |
| David and Sue Barkhausen | Charles and Pamela Burtch | Murray and Julie Cotter |
| Thomas and Sherry Barrat | Walt and Nancy Byers | Sherry Cotton |
| Mark and Devra Barrett | Emmet and Katherine Byrne | Council of Michigan Foundations |
| David and Robyn Barrie | Dennis and Claudia Calus | Mark and Peri Craig |
| Steve Bartha and Elena Forzani | Corrine Camero | Mr. Colby M. Crall |
| David R. Barton | James Campisi | Sharon and Kenneth Crockett |
| Scott Batchelor | Howard Canada | Jack and Marilyn Crotty |
| Deborah and Richard Baxter | Joe and Patty Cappy | Corey Crowell |
| Bay North Realty | Margaret Carlson | Pam and Paul Cupp Sr. |
| Bay View Association Morning Council | Russell and Christine Carpenter | Thomas Cusick |
| Bear Creek Woods Owners Association | John and Nona Carr | Joe and Julie Damore |
| Robert and Milissa Beaty | Tyler Carr | Al and Jane Damschroder |
| Mr. and Mrs. Gordon A. Becker | Corinne Carroll | Thomas and Connie Dansbury |
| Roger N. Beckley | Donna and Jack Carruthers | Dave Kring Chevrolet-Cadillac |
| Michael and Naomi Behrmann | Susan B. Carruthers | Joseph Davies |
| Cassie Belanger | Susan Sparrow Carson | Ed and Cindy Davis |
| Mr. and Mrs. B. Carter Benjamin | Rosine and James Cassidy | S.B. and Anne Davis |
| Jeffrey and Laura Bennett | David Catalan | Amelie Dawson |
| Lyn and David Berelsman | Tom and Janet Cattel | Debbie and Dave Deal |

James and Elizabeth Dealing
Deborah and Jack Dean
Guy and Caryn Dearing
Peterson and Marguerite Decker
Jack and Jenny Deegan
Ed Dembek
Marguerite A. Demmer
Wayne and Nanette Derkac
The Descamps Family
The Detrisac Family
Harry W. Dixon
Leslie L. Dixon
John and Nancy Donnelly
Michael Donnelly and Karen Strough
David and Connie Donovan
Drs. James A. and Maureen E. Doull
Zane and Deborah Doyle
William and Gail Drake
David and Susan Droste
Jane Drotos
Jason Drumheller
Taylor Davis Dubas
Donna Duff
Judith Dugal
Denise Dundon
Connie and Dick Dunlap
Bruce Dunn
Daniel and Sue Duval
Gary and Lynn Dwight
Bob and Connie Eaton
Reba and Robert Eberhardt
Michael D. Eberhart
Dr. John and Marlene Ebert
Walter and Sandra Ebling
ECMC Foundation
Edward Jones Charitable Gift Fund,
Council Tree Charitable Fund
Edward Jones Charitable Gift Fund,
Zachary G. and Kate M. Wagner
William J. and Julia M. Edwards
Foundation
Jennifer Eis
Patricia and Michael Elkind
Laura Elrod
Carl and Linda English
Jane and Walt Enterline
Mr. and Mrs. Jason R. Epler
Kathy and Steve Erber
Thomas and Susan Ervine
Mr. Robert H. Esford
Michael and Debbie Esposito
Frank Ettawageshik
Fabiano Foundation
Davis Fansler
Farm Bureau Insurance
Terry Farquharson
Michael and Kay Farrimond
Nancy Fazio
Michael Federspiel
Judith and Frederick Feldkamp

Ron and Lisa Fenech
Dina C. Fera
Fidelity Charitable
Fidelity Charitable, Carl and Susan
Bellman
Fidelity Charitable, Kimberly Hudolin
Fidelity Charitable, Richard and Sally
Knoll
Marc and Nancy Files
John and Bebe Finn
Andrea B. Fisher
Elise Fisher
Fernanda Dau Fisher
Jo Ann Fisher
John J. Fisher
Tyler Fisher
David K. FitzSimons
Michael and Margie FitzSimons
Fletch's
Karin Flint
Flowers from Sky's the Limit, Inc.
Martin and Madeline Flynn
Patrick Flynn
Matthew and Courtney Font
Chris, Ali, Will and Nick Ford
Karen Ford
The Ford Family
Susan S. Ford
Paul and Claire Forney
Dave and Koren Forqueor
Joyce I. Foster
William and Mary Foster
John and Jean Fought
Ella Fowler
Rick and Sue Fowler
Fox and Hound Boutique
Mark and Patty Fralick
Scott Franzen and Ellen Waite-Franzen
William P. Frazier
Kate Freeman
Robert Freeman
Windsor Freemyer
Chip and Jean Frenz
Amienne Frenzel
Frey Foundation
Andrew and Judith Frey
Mary Caroline Frey
Roger Fridholm
Bernd W. Friedrich
Friendship Centers of Emmet County
Martha Lancaster and Doug Fuller
Larry and Paula Funk
Gretchen A. Gabler
Trish and Jack Garber
Woodruff S. Gardner
Hilton G. and Lisa Garner
Cheryl and Dave Garrett
Patrick and Joyce Garrett
Gregg and Debra Garver
Sandra Gay

Barbara Geiger
The Gemini Foundation
Jason B. George
Ben Gerould
Douglas E. Gettel
Mike and Kathy Getz
Pat Gibbons
Gilbane Foundation
Mark and JoEllen Gilbert
Will Gillette and Deb Andreen
John and Lisa Gilligan
James and Mary Gillingham
Judith A. Gillow
The Gilmour-Jirgens Fund
Laura Gitre
Carol C. Godwin
Carl and Patricia Goeckel
Ken and Sue Gokee
Ryan Gokee and Zandra Gokee
Google
Gorter Family Foundation
Brian and Gretchen Grad
Terry and Cindy Graesse
Nancy Graham
Grand Lodge of Michigan IOOF
Eric Grandstaff and Alexis Kaczynski
Patti and Bally Grannis
Marjorie M. Green and Darwin Costello
Cynthia Greene
Paul and Lynn Greve
Pam Griffiths
Loriel K. Grigsby
Robert and Karen Grisnak
Mr. and Mrs. John Griswold
Donna and Rick Gross
Jim and Bridget Grossa
Carol and John Grossa
Grosse Pointe South Dugout Club
Nancy and Walter Grote Jr.
Timothy Grote
Gail Gruenwald and Wil Cwikiel
Keith R. Grunch
Gulf Coast Community Foundation,
David and Kay Wagner
Larry and Sue Gunderson
Sarah Gurney
Jeff and Cindy Hall
Theodore Halsted
Bob and Elaine Hameister
Joseph Hance
Elise A. Hanley
Carol Hansen
Harbor Springs Public Schools
Helen Harding
Becky Harobin
Janet Harris
Norm and Linda Harris
Virginia D. Harris
Phil and Melissa Harrison
Raymond and Bridget Hausbeck

Jodi Haven
Nancy Hayden
Diana Hayes
Michael and Ann Hayes
Deanna Heath and Rob Kantner
Jeanne and David Hedreen
Marjean Hefke
Jim and Carol Helmer
Steven Henderson and Lauri Kirsch
Jeff and Shellie Herman
Brian and Karen Herwig
Matt and Christine Hickman-Jackson
Margo and Paul Hields
Jeff and Ronnie Higgs
Dr. Hashem M. Hilal
Chris Ford and Ali Hill
Platt W. Hill
Shirley Hill
John A. Hillenbrand
Richard J. Hirrel
Nancy and Ed Hirschenberger
John Hoben Jr.
Margo L. Hodder
Bill and Marla Hoffman
Marcia and Dan Hoffman
Mark Hoffman
Philip Hoffman
Zachary Hoffman
Barbara and Jerome Hoganson
Lee and Patti Hohlbein
Charlie and Tracy Hollerith
Sharon Horgon
Susan and Ed Howbert
Howe Family Foundation, Rodger Howe
Fred and Margaret Hubacker
Harriet A. Huber
Roy and Suzanne Hubner
Pauline K. Hudson
Charles J. Huebner and Melanie Manary
Dennis and Suzanne Hug
Linda M. Hume
Virginia G. Hume
Pat and Ann Hylant
Benjamin and Kristina Ide
Indian River Community Foundation,
Donald Riefler
Irish Boat Shop
Ann K. Irish
David H. Irish Revocable Trust
Jane Irwin
Janet Ivory and Frank May
Michelle and Harold Jacobsen III
Kent and Jennifer James
Ardenne A. Jeffrey
Frank and Renee Jensen
Jon and Kris Hall
Aben Johnson
Broc and Lynne Johnson
Jeri L. Johnson
Michael and Nancy Johnson
Stirling Johnson
Elcott and Leslie Jones
John Joslin
Sophia Juan
Cathy Kalahar and David Evrard
Ray and Karen Kalinowski
Bill and Carla Kanine
Perry and Denise Kantner
Michael Jason Kaselitz
Chester and Kathleen Kasiborski
Marny and Craig Kaufman
Renee McDuffee and Kevin Kavanagh
Bob and Mary Keedy
Joe Keedy
Kelbel Pharmacy

Jim and LeAnne Kelbel
Michael Kelbel
Amy Kelbel
James and Marilyn Keller
Rick and Ann Kelley
Julie and James Kelly Jr.
Thomas and Jodie Kennedy
David Kent
Gale Kepford
Derek and Carolyn Kerr
Randy Keys
Kilwin's Quality Confections, Inc.
Brenda King
John and Karen King
Lawrence and Barbara King
LeeAnn Carol King
Michael King
Paul King
Kelsie King-Duff and Joe Duff
Susan Kinney
Lois Kircher
Patricia Kishigo
Stewart and Susan Kissinger
Klepadlo Winnell Nuorala P.C.
The Klopcc Family Foundation
Don and Jan Klopcc
Keith Klopcc
Leroy and Joan Klopcc
Bruce Koch and Cameron Brunet-Koch
Frederick G. Koehler Sr.
Robert and Cordelia Korhman
Jo-Anna C. Kolodziej
Laura Kors
George and Brenda Korthauer
Michael and Nancy Kota
Bruce Kovan
Liz Krimendahl
Marjorie R. Kroeger Charitable Lead Trust
John Kroha
Glen and Rebecca Kruse
Marion E. Kuebler
Quinton and Patricia Kuebler
Deborah Kullik
Johannes and Deborah Kurd
Ronald and Barbara Kurtz
Robert W. Laakman
Rich and Joy Labadie
Vicki LaChapelle
Paul and Chris Lamarche
Michael and Helen Lambert
Frank and Carole Lamberti
Judith M. Landis
Philo Lange
Dana Lapekas
L'Arbre Croche Club
Roberta Lardner
Duane and Judith Larock
Allen Lassiter
Dennis and Jill Lauer
Greg and Marie Law
Richard and Amy Law
Susan Law
The Dave Lawrence Family
David and Mary Pat Lawrence
Daniel R. Ledingham
Phyllis Ledyard
Richard A. Lent
Donald and Janet Leonard
Gary and Carol Leonard
Lisa Leonard
Robert and Margo Lesser
Glenn and Pam Lewandos
Fred and Kathy Liederbach
Susan Lightfoot
Wayne and Georgia Lindstrom

Thomas and Mary Ling
Jimmy Liss
Little Manistee Watershed
Conservation Council
Little Traverse Sailors
Shelly Lloyd
Neil and Patricia Loney
The Lord Family
Jeffrey and Catherine Lowe
Gwen and T. Kirk Lowry
Ric and Lisa Loyd
Clayton Lucey
Kathy Tyler Luckett
Carl and Lori Luepnitz
Carroll Lumley
Mr. and Mrs. Richard E. Lund
Jeanine and Joseph Lunghamer Jr.
Lustgarten Global PLC
Audrey Lustgarten
Mark and Rebecca Lybrink
Paul and Lisa MacArthur
Kenneth and Deirdre MacDonald
Douglas and Maureen MacDougall
Stephen and Teresa MacEachern
Jim and Lauren Macintyre
Margaret Mackell
Fraser and Darcy MacKenzie
Joy, Arlo, and Lindyn MacLean
Hans and Jacquelyn Maier
Carey Main
Sheila Malleis
Michael and Christina Manchester
Janet M. Mancinelli
Dr. Boyd W. Manges
Larry and Marilyn Mann
The Marks Family
Michael and Caroline Marks
Terrence and Loretta Marrs
J. Jesse, Tonya, John E, "LJ"
and Abbey Martin
Sally and Bill Martin
Webb and Jan Martin
Sharon Martindale
Dudley and Darlene Marvin
Neil Marzella
John and Jennifer Mastenbrook
Patti Matsumoto
Corey May
Marjorie May Trust
R. Glen Mayfield
Carolyn and Ben Mayne III
David and Joy McBride
Nan McCallum
Timothy and Patricia McCarthy
P. Abbott McCartney
Matthew McColl and Debra Baker
Ann and William McCormick Jr.
Virginia B. McCoy
Chris McGratty
Elizabeth McKaig
Kelly and M.J. McKee
Frederick and Margaret McMaster
Audrey and Ray McMullen
Catherine McVicker and Eric Rasmussen
Sonnet Meek and Gregory Curtner
Dr. William Meengs
Mercantile Bank of Michigan
Katy Messacar
Constance Messner
James and Jennifer Mesterharm
Val Meyerson
Pam Michell
Ralph and Patti Miesel
Dr. William H. Millar
Phil and Peggy Millard

FILLED WITH GRATITUDE:

Thank You, Donors

We are grateful for your financial support. Your name is important to us. If your name is incorrect or omitted, please let us know, so we can correct our error. ***This annual report reflects the fiscal year ended on March 31, 2022.***

Millennium Sports Inc.
 Adrienne and Michael Miller
 Dorothy B. Miller
 James and Linda Miller
 Kathy Miller
 Jamie Mills
 Dan and Mary Moellering
 Nicholas and Alexandra Moisesides
 John and Kebby Monaghan
 Austin Moon
 Joseph and Elizabeth Moran
 Sharon Moran
 Arnold P. Morawa
 Morgan Stanley Gift Fund, Jeff and Shellie Herman
 Arlene Motley
 Kathy Motschall
 Gayle Mroczkowski
 Susan and Emil Muccino II
 Bill and Dana Mulder
 Richard Mullaney
 Jerome W. Mulligan
 Dennis and Nancy Mummert
 John and Denise Mundy
 Henry C. and Audrienne Murray Foundation
 Nehemiah Project
 Cara Neitzel
 Cynthia Nelson
 Franz and Joan Neubrecht
 Rick and Meredith Neumann
 Dan and Patty Neumeyer
 James Kelley Newton
 Melissa and Tinh Nguyen
 Maureen Nicholson
 Lisa Nicol
 Tom and Ellen Noneman
 Gary and Amanda Norcross
 Bill and Julie Norcross
 Samuel and Nancy Norris
 North Branch Boys Fly Fishing Club Inc.
 C. Wayne Nowels
 Kyle Nowels
 Tammie Nowels
 Virginia Nuffer
 Mike and Susie Nuorala
 Bruce and Katherine Nyberg
 Oakland Community College Culinary Arts Department
 Richard and Julie O'Connor
 Thomas and Linda Oelke
 Karin Reid Offield
 Catherine Ogden
 David Olshefsky
 Elly Oom and Bill Warner
 Declan O'Reilly
 Peter O'Rourke
 Jim and Bev Osetek
 Wesley and Elizabeth Ostrander
 Mary Jane Overmyer
 Mark Paddock
 Nancy B. Paige
 David and Mary Parker
 Mr. and Mrs. David Jeffrey Parks
 Lee and Jackie Parrish
 Bill and Judy Patberg
 Robert and Alice Pattengale
 PayPal Giving Fund
 David Paz
 Brenna Pelerin
 Marcy Pelton and Chuck Schafer
 Tim and Diann Pendell
 Larry Pensinger

Jon Peterson
 Robert and Susan Peterson
 Petoskey-Bay View Country Club, The Ladies Niners Golf Association
 Kathryn and Thomas Petz Jr.
 Bill and Jane Petzold
 John D. Pickering
 Tim Pierson
 William and Mary Pierson
 Pineview Cottage LLC
 Pink Trillium Photography
 Ruth Pitera
 Jennifer Olsen and Tim Pletcher
 Louise Pollie
 Sarah A. Post
 Doug and Ann Povenz
 Casey and Jennifer Powers
 Mark and Patricia Prendeville
 Nancy Priestap and Kirk Sponseller
 Ben Proben
 H. Roy Pulaski
 Michael and Elizabeth Pulick
 Thomas and Kathleen Pustell
 Michael and Caroline Pyle
 Laura Raines
 Amb. and Mrs. John Rakolta Jr.
 Linda Rakolta
 Dr. and Mrs. Henry Ramseur
 M. Kathryn Ransford
 Jeffrey and Martha Raphelson
 Ron and Colleen Rapson
 Dr. and Mrs. John R. Rasmussen
 Paul and Kelly Raubolt
 Raymond James Charitable, Mark and Laurie McMurray
 Real Estate One Petoskey, Charlevoix and Indian River
 Glenn and Barbara Reed
 Gare B. Reid
 Scott Reiss
 Richard and Barbara Resler
 Dorothy and Hassan Restum
 James and Kay Mary Rettig
 Mr. and Mrs. Thomas A. Reynolds III
 Bruce E. Rhoades
 Gordon Rich
 Lawrence and Ann Richey
 Teresa Richie
 Ronald D. Rinker
 Stuart Risby
 Nancy Rivard
 John W. Roberts
 Cordelia W. Robinson
 Rae Ann Roche
 Larry and Elaine Rochon
 Rocket Giving Fund
 Sarah V. Rogers
 Bruce and Nancy Romant
 Franklin and Carol Ronan
 John Roon
 Sarane H. Ross
 Drs. Benjamin and Andrea Rossi
 Richard and Karen Rossi
 Debbie Rothchild
 Peter Ruffner
 Joseph and Marie Ruicci
 Mrs. William G. Rupp
 Scott and Pat Russell
 David and Mary Ellen Ryan
 Phil and Patrice Ryan
 Tom and Joan Ryan
 Timothy and Nicole Ryder
 Thomas and Molly Saeli
 Salmo Java Coffee Roasters

San Francisco Foundation, Terry Gamble and Peter Boyer Fund
 Charles and Carolyn Sanback
 Brian K. Sanderson
 Pamela Sapiente
 Thomas and Nancy Sarosi
 Tom and Nancy Sarowski
 William and Janet Sarran
 Donald Schappacher
 Michael H. Schirmer
 Roger Schmidt
 Marian Schneider
 Donald and Teresa Schorfhaar
 Kathy and Jim Schroeder
 Robert and Nancy Schuler
 Turner Schultz
 Schwab Charitable
 JR and Catherine Scriven
 Kevin and Jean Scroggin
 Glen B. Seaman
 John and Karen Seehausen
 Bill Seguin
 Corey and Suzanne Seitz
 Jill and Scott Sellers
 Bob and Nancy Sellers
 Christine and Louis Seno Jr.
 Andrea and Ronald Shafer
 Matt Shalhoup
 Marcia and Trish Shattuck
 Deborah Shaw and Stephen Marquardt
 William Shelton
 Phoebe Sheppard
 Michael Shields
 Peter and Margaret Shields
 James and Laura Shirilla
 Shozam Golf, LLC
 Mr. and Mrs. M.G. Shuffield
 Matthew Shultz
 John and Mary Sue Siciliano
 Janet Siegel
 Richard and Marilyn Sigler
 Anne and Skip Simms
 Craig R. Sincock
 Erin Sindberg Porter
 Anthony and Mary Stiko
 Patricia A. Slebiska
 Bradley Smith
 Thomas and Caroline Smith
 Charlotte Bruce
 Melvyn and Nancy Smith
 Sara E. Smith
 Scott and Dibby Smith
 Stafford and Janice Smith
 JoAnne Snyder
 Julia Snyder
 Mike and Kathy Snyder
 Janice J. Soblesky
 Souder Family Foundation
 Robert and Sue Spangler
 Spartan Distributors
 Andrew and Susan Spence
 Joanne Spence
 Steve and Julie Spencer
 Gary Spicer Sr.
 John Starkel
 Samantha Stears
 Kenyon Stebbins and Susan Lyman
 Christopher and Mary Susan Steffen
 Elizabeth Stegemann
 Timothy and Corrine Sterling
 Glenn and Betty Stevens
 Tamara Stevens
 Susan I. Stewart
 Ann Stimer

Matthew Stinson
 Edward and Karla Stokel
 Kelley Stokes-Samuel
 Karl J. Strand
 Mauri and George Straulino
 Al and Sandy Straus
 Shelley Strickland
 Kermit and Mary Ellen Stroh
 Theresa Strong
 Michael and Mary Jo Sullivan
 Sarah Sutton
 Chris Swanson
 James and Pamela Swanson
 Robert S. Swanson
 Ted Swanson
 Cheryl and Richard Swarthout
 Peggy Swenor
 Patricia Swoveland
 Joseph Sylvain
 Thomas Flood
 Roger and Cheryl Tallman
 Mary Lou Tanton
 Duane and Sheila Tarnacki
 Susan J. Taubitz
 David and Elizabeth Taylor
 Julia J. Taylor
 Kendal and Christine Taylor
 Margaretta Johnson Taylor
 Marilyn Sue Taylor
 Lee and Liz Tegland
 Rick Terrassa
 Donna Terry
 Philip and Rachel Thornton
 Tim and Jessica Tippet
 Margo A. Todd
 Toledo Community Foundation, David and Heidi Waterman
 George and Naomi Tolley
 Triford Foundation, Horace C. Ford
 Triford Foundation, James and Laurie Ford
 Triford Foundation, Jeffrey and Karen Ford
 Triford Foundation, Susan S. Ford
 Miles and Suzanne Trumble
 Dan Turcott
 Michael and Patricia Turnbull
 Robert and Martha Turner
 Bob and Krista Tuuk
 Amy Tweeten
 William Twiddy
 Jennifer Tyler
 Greg and Sandra Ulmer

Cheryl and Dennis Vallance
 Ronald VandenBrink and Jan Biddick
 Cheryl and Bruce VanderMolen
 Susan and Tom VanDeventer
 Thomas VanEtten
 William and Donna VanEvery
 J. Michael and Nancy Kota
 Daniel VanVoorhis
 Michael VanWormer
 Mark and Tina Verlinden
 Michael and Sarah Verlinden
 Katelyn Videto
 Kevin and Mary Anne Virostek
 Vitauts and Mary Margaret Vitolins
 Greg and Jan Voelker
 Brian and Dawn Wagner
 Sarah, Polk, Ellie and Trip Wagner
 Bob and Jennifer Waldvogel
 Sharon Walker
 Celeste and Michael Wall
 Ward and Mari Margaret Walstrom
 Steven and Julie Ann Wang
 Jane Warner
 David and Suezanne Watson
 Scott and Andrea Weaver
 Mr. and Mrs. C.H. and R.A. Webber
 Greg and Alicia Webster
 Stephan and Jeanne Weitzel
 Gerald and Gail Wells
 Paula Welmers and Fred Mulhauser
 Laurissa Wendland
 Jeffrey and Candace Wendling
 Henry E. & Consuelo S. Wenger Foundation, Inc.
 Mike Wheeler
 Jill Whelan
 Patricia Whitehouse
 Rich and Julie Whitney
 Mrs. Terry Whittemore
 John and Jean Wickett
 Gerard and Laura Wickett
 Dee and Dan Wickham
 John Wicklund III
 Craig and Joanne Widmaier
 Raymond Wieckert and Jean Scates
 Tim and Peggy Wilcox
 Alan and Jan Wilhere
 Catherine Williams
 Ima Jo Williams
 Keith and Karen Williams
 Mary Ruth and Diane Williamson
 Larry Willis and Robyn Ellis
 Belinda and Gerald Wilson

Valerie Wilson and Tracy Wintermeyer
 Amy Wingate
 Carole Winnard
 Michael and Kate Winnell
 James and Carol Wojcik
 Gary and Judy Wolf
 Women's Resource Center of Northern Michigan
 James Woods
 Richard and Kristin Wren
 David and Susan Wright
 Marcia Wright
 Stephen and Kelly Wright
 Col. and Mrs. William A. Wyman
 Joel Yoder
 John and Deborah Zahnow
 The Zealous Root
 Jennifer Zeisler
 Dr. Beverly A. Zelt
 Jodi and Fred Zipp
 Joanne Nowels Zlydnik
 Doug and Nancy Zoerhoff

CONTRIBUTIONS FROM PHSAC FUNDS

Biltz Family Community Fund
 Bleyaert Family Fund
 Bund Family Fund
 Buzzelli Family Charitable Fund
 Byers Family Charitable Fund
 Tom and Susie Carruthers Fund
 Maggie and Bob Charlton Family Fund
 Perry D. and Karen L. Clark Fund
 Deborah and David Deal Gift Fund
 Donovan Charitable Fund of Harbor Springs
 Mike and Cheryl Eberhart Family Fund
 Ted and Brenda Frey Donor Advised Fund
 Holder Family Foundation Fund
 Thomas and Patricia Jeffs Fund
 Ledyard Family Charitable Fund
 Loyd Family Fund
 Mary Clare Reynolds Joyce Fund
 Susan Irish Stewart Charitable Fund
 Tanton Family Fund
 Marana Webber Tost Charitable Fund
 Brian and Dawn Wagner Charitable Fund



DONOR SPOTLIGHT: Declan O'Reilly

Meet Declan O'Reilly, age nine: Royal Oak resident, avid fisherman, young philanthropist. When Declan learned about efforts to restore the native Arctic Grayling to the waters of Michigan, he was hooked. For his ninth birthday in 2021, Declan asked that friends and family donate to the Arctic Grayling Reintroduction Fund, a special project fund established in 2019 at the Community Foundation by the Michigan DNR's Fisheries Division. Declan handily met his first (and second) fundraising goals and, to date, has raised over \$3,600 for the initiative.



JOHN S. CLARK LEGACY SOCIETY:
One Member's Impact



Marge May

FUNDS CREATED:

Marge May Fund (*Established: 1995*)

GRANTMAKING DOLLARS TO DATE:

\$82,232

When our founders established the Petoskey-Harbor Springs Area Community Foundation, the seed they planted was nurtured by generous contributions that helped us get up and running. And the very first of these many gifts was given by Marge May.

A veteran who served in both the United State Army and Marines and retired educator who spent most of her teaching career in Alanson, Marge May loved everything about northern Michigan. She loved nature and had a keen interest in local history, particularly the Odawa people. During her lifetime, she carried these interests through to her community service.

In the spirit of giving back, Marge was also the first donor to the Community Foundation in February 1992 with a gift of \$200 to our Operations Fund. Marge's gift set the ball rolling to open the foundation's doors. And, thanks to generous donors just like Marge, her gift was pooled with other operations gifts from the community that totaled \$42,000 in 1992. To date, donations to our operating fund total nearly \$1.5 million.

Marge continued her support of the Community Foundation by establishing an endowed fund in her own name in 1995. While she made gifts to that fund during her lifetime, her last and largest gift was a bequest following her death in 2018. In her will, Marge had laid out her wishes which included bequests to numerous local nonprofit organizations

Today the Marge May Fund generates unrestricted dollars that go back into our community during our twice yearly grant cycles. To date, Marge's fund has provided over \$80,000 in grant dollars that go directly to organizations serving the people of Emmet County. And thanks to the power of endowment, her fund will continue to add to our grantmaking ability year after year in perpetuity.



Legacies Living On...

John S. Clark Legacy Society

- Anonymous (4)
- Dick and Annette Babcock
- Mary J. Baird Family
- Neil and Marsha Bidwell
- Agatha O. Boettger*
- Roma Walstrom Bolline*
- James H. Buller
- Barbara and David Buzzelli
- Michael T. and Martha C.* Cameron
- John W. Carpenter Jr.*
- Maggie and Bob* Charlton
- Sally S. and John S. Clark**
- James and Carolyn Cloutier
- Catherine G. Curran*
- Al and Jane Damschroder
- Debbie and Dave Deal
- Ross and Nancy DeFries
- Mike and Cheryl Eberhart
- Suzanne Felt*
- Edward J. "Ted" Frey Jr.*
- Bud Germond*
- Marjorie E. Green*
- Gladys Hamill
- Bonnie Hess*
- Margo L. Hodder
- Fred and Diane* Hoffmann
- Darlene M. Holcomb
- Mr. and Mrs. Robert D. Horner**
- Harriet (Penny) Abbott Huber
- Don Hufford*
- Brian and Jean* Hunt
- Marilyn M. Icke*
- David H. Irish*
- Penny and Mike Isermann
- David L. Jones
- Cathy Kalahar and David Evrard
- Kate Kelly
- Clark* and Grace Ketchum
- Mr. and Mrs. Frederick G. Koehler Sr.**
- Kathryn Krecke
- Mr.* and Mrs. William Laimbeer Sr.
- Dan and Mary Ledingham
- Dick and Jane Lent**
- Janet M. Mancinelli
- Jamie and Mary Kay Martin
- Emer A. Mathias*
- Carol Matyniak
- Marge May*
- Dave and Joy McBride
- Sheryl McCleery
- Jinny McCoy
- Jeff and Genie McEvoy
- Dr. and Mrs.* William Meengs
- Emerson John Meyer
- Emily Meyerson
- Edward J. Neithercut*
- Maureen Nicholson
- Scott and Melissa Okerlund
- Richard and Maggie Onkey
- Albert and Carol Osborn**
- John D. Pickering
- Jim and Jane Ramer
- Dr. and Mrs. Henry Ramseur
- Sara Scholl*
- Suzanne Schulze
- Dorothy Scott*
- Stephen B. and Sandy P. Selden
- B.J. Shawn*
- Ann Smith*
- Scott and Dibby Smith
- Mary Lou and John* Tanton
- Marana Tost*
- Roberta Vander Breggen
- Greg and Jan Voelker
- Sharon Walker
- Don Ward* and Jennifer Eis
- Currie and Mary Weed
- Janice Wegesin*
- Ann Dow Weinberg*
- Arla Weinert*
- Valerie Wilson
- Hugh Winnell*
- Todd C. and Jennifer L. Winnell
- Col. and Mrs. William A. Wyman
- John and Deborah Zahnow
- Elayne Zaiger*
- Dr. Louis and Mary Jane Zako

**Those noted are no longer with us, but their legacy lives on.*

MEMBERS OF THE LEGACY SOCIETY HAVE PLEDGED A GIFT TO THE COMMUNITY FOUNDATION THROUGH THEIR WILL, TRUST OR ESTATE PLAN.



Petoskey-Harbor Springs Area
community foundation

616 Petoskey Street, Suite 203
Petoskey, MI 49770

231.348.5820

www.phsacf.org



Excellence. Accountability. Impact.™